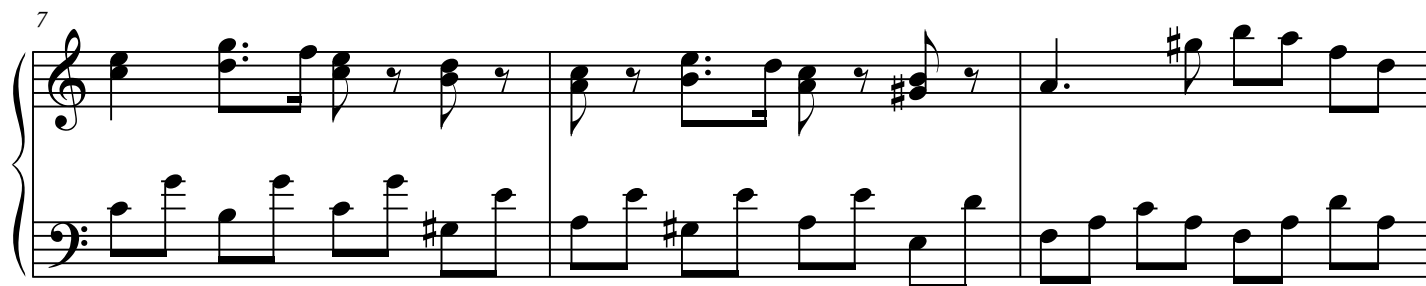
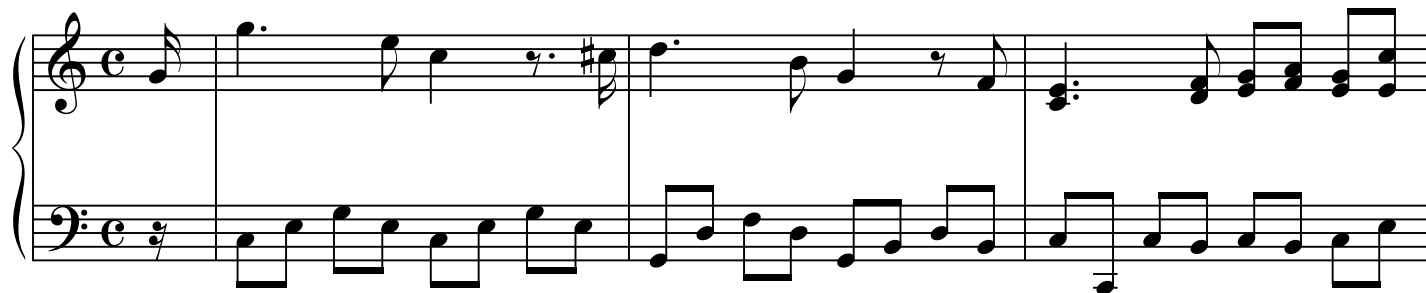


# Sonatina Op.19/20 N. 2

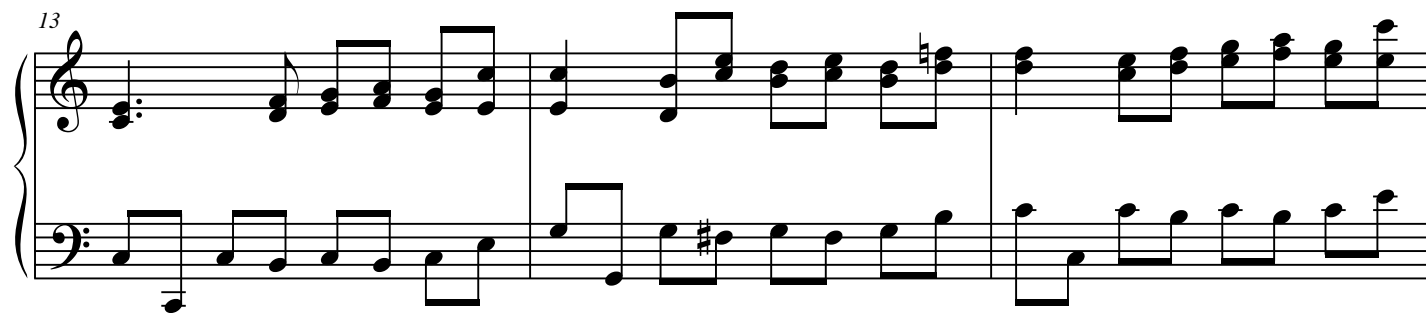
I Tempo

Jan Ladislav Dussek (1760/1812)

Allegretto quasi andante

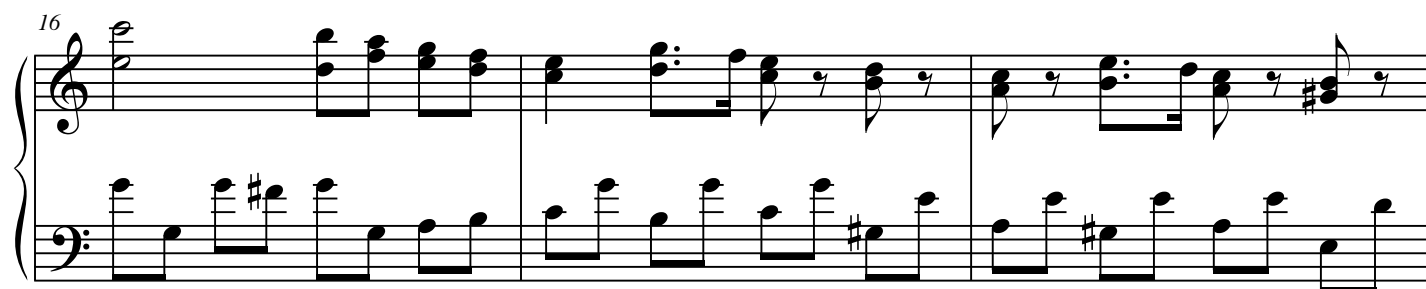


13



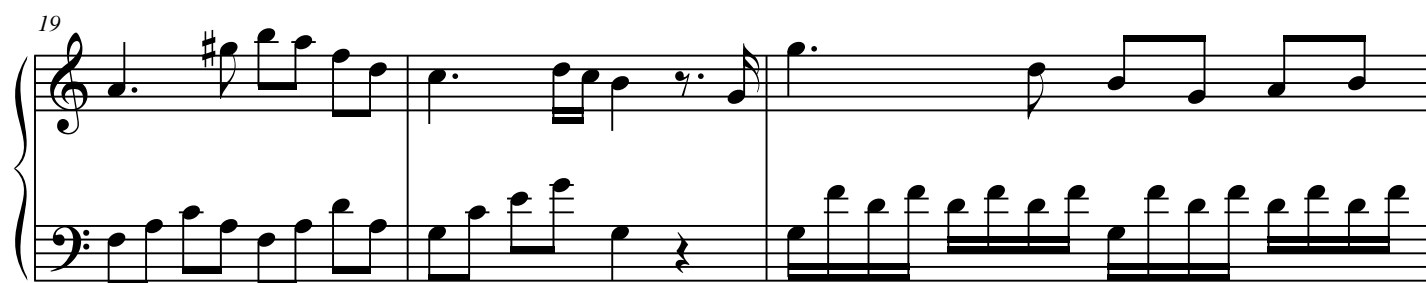
System 13: Treble and bass staves. Treble staff has a key signature change to one sharp (F#) and a common time signature. Bass staff continues with eighth notes.

16



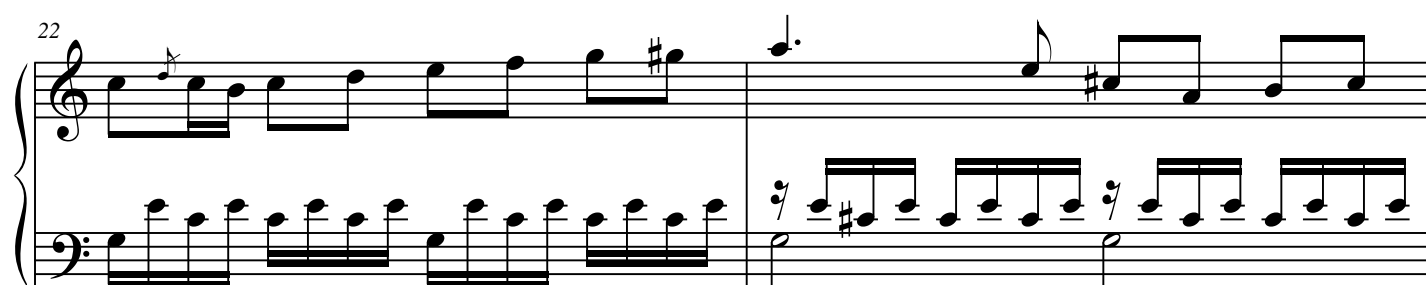
System 16: Treble and bass staves. Treble staff has a key signature change to two sharps (F#, C#) and a common time signature. Bass staff continues with eighth notes.

19



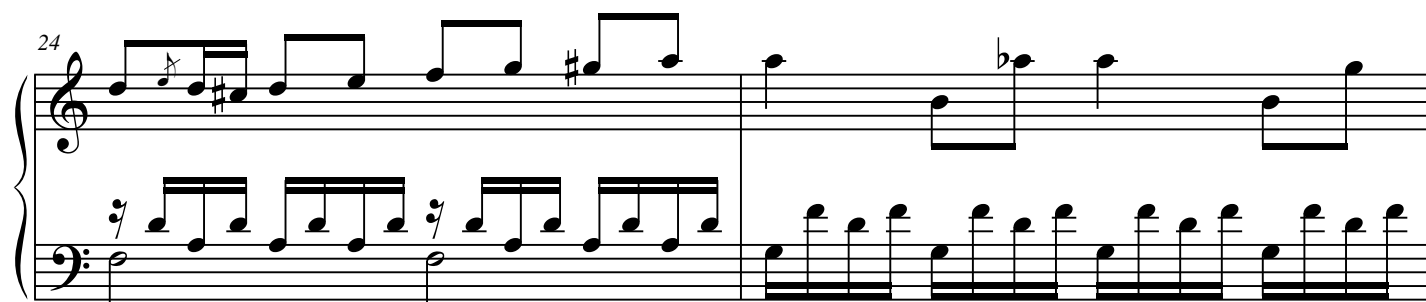
System 19: Treble and bass staves. Treble staff has a key signature change to two sharps (F#, C#) and a common time signature. Bass staff continues with eighth notes.

22



System 22: Treble and bass staves. Treble staff has a key signature change to two sharps (F#, C#) and a common time signature. Bass staff continues with eighth notes.

24



System 24: Treble and bass staves. Treble staff has a key signature change to two sharps (F#, C#) and a common time signature. Bass staff continues with eighth notes.

26

Measures 26-27. Treble clef: Measure 26 has a half note G4, quarter note A4, quarter note B4, and half note C5. Measure 27 has a half note C5, quarter note B4, quarter note A4, and half note G4. Bass clef: Measure 26 has a continuous eighth-note pattern: G3, A3, B3, C4, D4, E4, F4, G4. Measure 27 has a continuous eighth-note pattern: G3, A3, B3, C4, D4, E4, F4, G4.

28

Measures 28-29. Treble clef: Measure 28 has a half note G#4, quarter note A4, quarter note B4, and half note C5. Measure 29 has a half note C5, quarter note B4, quarter note A4, and half note G#4. Bass clef: Measure 28 has a half note G3, quarter note A3, quarter note B3, and half note C4. Measure 29 has a half note C4, quarter note B3, quarter note A3, and half note G3.

30

Measures 30-31. Treble clef: Measure 30 has a continuous eighth-note pattern: G#4, A4, B4, C5, D5, E5, F5, G5. Measure 31 has a continuous eighth-note pattern: G#4, A4, B4, C5, D5, E5, F5, G5. Bass clef: Measure 30 has a continuous eighth-note pattern: G3, A3, B3, C4, D4, E4, F4, G4. Measure 31 has a continuous eighth-note pattern: G3, A3, B3, C4, D4, E4, F4, G4.

32

Measures 32-34. Treble clef: Measure 32 has a half note G#4, quarter note A4, quarter note B4, and half note C5. Measure 33 has a half note C5, quarter note B4, quarter note A4, and half note G#4. Measure 34 has a half note G#4, quarter note A4, quarter note B4, and half note C5. Bass clef: Measure 32 has a continuous eighth-note pattern: G3, A3, B3, C4, D4, E4, F4, G4. Measure 33 has a continuous eighth-note pattern: G3, A3, B3, C4, D4, E4, F4, G4. Measure 34 has a continuous eighth-note pattern: G3, A3, B3, C4, D4, E4, F4, G4.

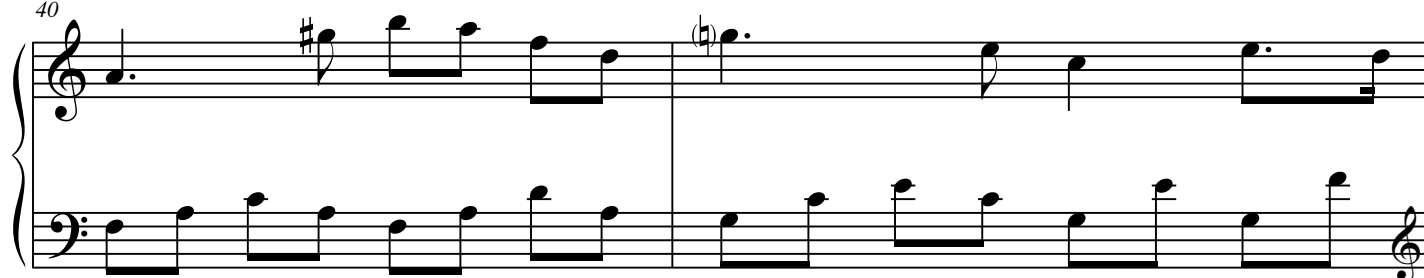
35

Measures 35-37. Treble clef: Measure 35 has a half note G#4, quarter note A4, quarter note B4, and half note C5. Measure 36 has a half note C5, quarter note B4, quarter note A4, and half note G#4. Measure 37 has a half note G#4, quarter note A4, quarter note B4, and half note C5. Bass clef: Measure 35 has a continuous eighth-note pattern: G3, A3, B3, C4, D4, E4, F4, G4. Measure 36 has a continuous eighth-note pattern: G3, A3, B3, C4, D4, E4, F4, G4. Measure 37 has a continuous eighth-note pattern: G3, A3, B3, C4, D4, E4, F4, G4.

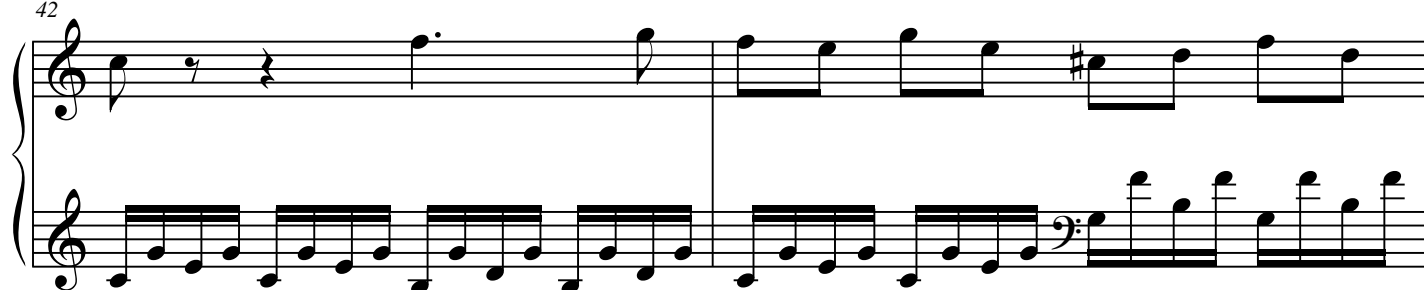
38



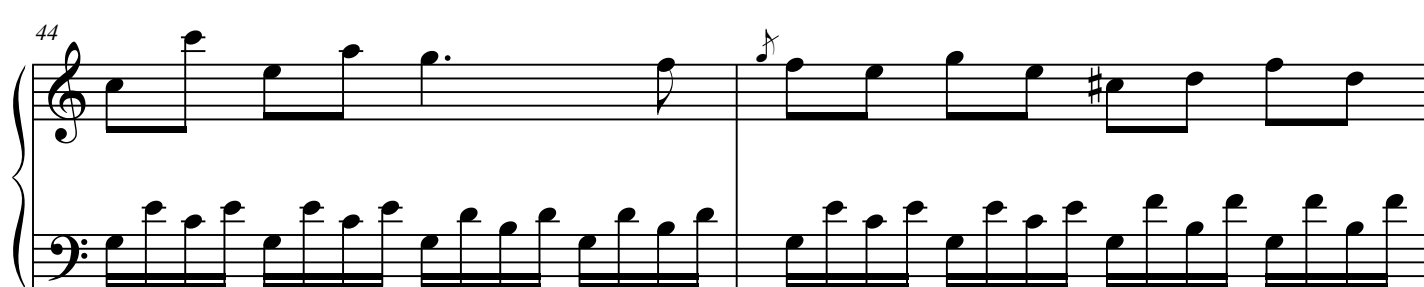
40



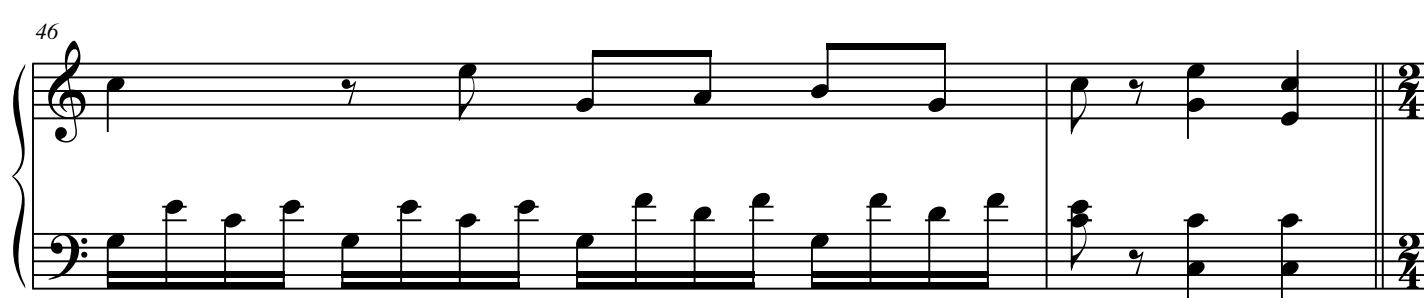
42



44



46



## II Tempo

## RONDÓ

Non presto

48

Measures 48-52 of the RONDÓ section. The music is in 2/4 time. The right hand features a continuous eighth-note melody, while the left hand provides a steady accompaniment of eighth notes. The key signature has one sharp (F#).

53

Measures 53-56 of the RONDÓ section. The right hand continues the eighth-note melody. In measure 56, the right hand has a trill on the G4 note. The left hand continues with eighth-note accompaniment.

57

Measures 57-60 of the RONDÓ section. The right hand continues the eighth-note melody. In measure 60, the right hand has a trill on the G4 note. The left hand continues with eighth-note accompaniment.

61

Measures 61-64 of the RONDÓ section. The right hand continues the eighth-note melody. In measure 64, the right hand has a trill on the G4 note. The left hand continues with eighth-note accompaniment.

66

Measures 66-71: Treble clef contains eighth-note and quarter-note patterns. Bass clef contains eighth-note and quarter-note patterns.

72

Measures 72-77: Treble clef contains eighth-note and quarter-note patterns with a key signature change to one flat. Bass clef contains eighth-note and quarter-note patterns.

78

Measures 78-81: Treble clef contains eighth-note and quarter-note patterns. Bass clef contains eighth-note and quarter-note patterns.

82

Measures 82-85: Treble clef contains eighth-note and quarter-note patterns. Bass clef contains eighth-note and quarter-note patterns.

86

Measures 86-91: Treble clef contains eighth-note and quarter-note patterns. Bass clef contains eighth-note and quarter-note patterns, ending with a final chord.

91

This system contains measures 91 through 95. The right hand features a continuous eighth-note melody, with a sharp sign above the first measure and flat signs above measures 93 and 94. The left hand provides a harmonic accompaniment with chords and single notes, including a flat sign above the first measure.

96

This system contains measures 96 through 100. The right hand continues the eighth-note melody. The left hand accompaniment consists of chords and eighth-note patterns, with a flat sign above the first measure.

100

This system contains measures 100 through 104. The right hand melody continues. The left hand accompaniment includes a flat sign above the first measure and a bass clef at the end of the system.

104

This system contains measures 104 through 108. The right hand melody continues. The left hand accompaniment includes a flat sign above the first measure.

108

This system contains measures 108 through 112. The right hand melody continues, ending with a flat sign above the final measure. The left hand accompaniment includes a flat sign above the first measure and a double bar line at the end of the system.

112

System 112-116: Treble and bass staves in B-flat major. Treble staff: 112 (quarter, quarter, quarter), 113 (quarter, quarter, quarter), 114 (quarter, quarter, quarter), 115 (quarter, quarter, quarter), 116 (quarter, quarter, quarter). Bass staff: 112 (quarter, quarter, quarter), 113 (quarter, quarter, quarter), 114 (quarter, quarter, quarter), 115 (quarter, quarter, quarter), 116 (quarter, quarter, quarter).

117

System 117-121: Treble staff: 117 (quarter, quarter, quarter), 118 (quarter, quarter, quarter), 119 (quarter, quarter, quarter), 120 (quarter, quarter, quarter), 121 (quarter, quarter, quarter). Bass staff: 117 (quarter, quarter, quarter), 118 (quarter, quarter, quarter), 119 (quarter, quarter, quarter), 120 (quarter, quarter, quarter), 121 (quarter, quarter, quarter).

122

System 122-126: Treble staff: 122 (quarter, quarter, quarter), 123 (quarter, quarter, quarter), 124 (quarter, quarter, quarter), 125 (quarter, quarter, quarter), 126 (quarter, quarter, quarter). Bass staff: 122 (quarter, quarter, quarter), 123 (quarter, quarter, quarter), 124 (quarter, quarter, quarter), 125 (quarter, quarter, quarter), 126 (quarter, quarter, quarter).

127

System 127-131: Treble staff: 127 (quarter, quarter, quarter), 128 (quarter, quarter, quarter), 129 (quarter, quarter, quarter), 130 (quarter, quarter, quarter), 131 (quarter, quarter, quarter). Bass staff: 127 (quarter, quarter, quarter), 128 (quarter, quarter, quarter), 129 (quarter, quarter, quarter), 130 (quarter, quarter, quarter), 131 (quarter, quarter, quarter).

132

System 132-136: Treble staff: 132 (quarter, quarter, quarter), 133 (quarter, quarter, quarter), 134 (quarter, quarter, quarter), 135 (quarter, quarter, quarter), 136 (quarter, quarter, quarter). Bass staff: 132 (quarter, quarter, quarter), 133 (quarter, quarter, quarter), 134 (quarter, quarter, quarter), 135 (quarter, quarter, quarter), 136 (quarter, quarter, quarter).



137

System 137-141: Treble and bass staves. Treble staff has a slur over measures 138-140. Measure 139 has a flat accidental on the second staff.

142

System 142-146: Treble and bass staves. Measure 145 has a sharp accidental on the first staff.

147

System 147-151: Treble and bass staves. Measure 147 has a triplet in the treble staff.

152

System 152-156: Treble and bass staves. Measure 155 has a triplet in the treble staff.

157

System 157-161: Treble and bass staves. Measure 160 has a flat accidental on the second staff.

162

162

163

164

165

166

167

The musical score for measures 167-171 is written for piano. The key signature has two flats (B-flat major), and the time signature is 2/4. The melody in the right hand is composed of eighth and quarter notes, with some measures containing beamed eighth notes. The left hand provides a steady accompaniment of eighth notes. The score is divided into five measures by vertical bar lines.

177

The musical score for Example 177 consists of two staves. The top staff is in treble clef and the bottom staff is in bass clef. The key signature is one sharp (F#) and the time signature is 3/4. The music is written in G major. The score includes various musical notations such as notes, rests, and accidentals. The first staff begins with a treble clef and a key signature of one sharp. The second staff begins with a bass clef and a key signature of one sharp. The music is written in G major. The score includes various musical notations such as notes, rests, and accidentals. The first staff begins with a treble clef and a key signature of one sharp. The second staff begins with a bass clef and a key signature of one sharp. The music is written in G major. The score includes various musical notations such as notes, rests, and accidentals.

182

182

187

Measures 187-192. The right hand features a melodic line with eighth and sixteenth notes, including a flat accidental in measure 188. The left hand provides a steady accompaniment of eighth notes. The system concludes with a double bar line and repeat signs.

193

Measures 193-197. The right hand continues with a melodic line of eighth and sixteenth notes. The left hand accompaniment consists of eighth notes, with a fermata over the final measure (197).

198

Measures 198-201. The right hand features a melodic line with eighth and sixteenth notes, including a sharp accidental in measure 200. The left hand accompaniment consists of eighth notes. The system ends with a double bar line and a bass clef.

202

Measures 202-205. The right hand continues with a melodic line of eighth and sixteenth notes. The left hand accompaniment consists of eighth notes. The system ends with a double bar line and a fermata over the final measure (205).

206

Measures 206-209. The right hand features a melodic line with eighth and sixteenth notes, including a sharp accidental in measure 208. The left hand accompaniment consists of eighth notes. The system ends with a double bar line and a fermata over the final measure (209).

210

Measures 210-214. Treble clef. Key signature: one sharp (F#). Measure 210: quarter note F#4, eighth notes G#4-A4-B4, quarter rest. Measure 211: quarter note F#4, quarter rest. Measure 212: quarter note F#4, eighth notes G#4-A4-B4, quarter rest. Measure 213: quarter note F#4, quarter rest. Measure 214: quarter note F#4, eighth notes G#4-A4-B4, quarter rest. Bass clef: Measure 210: F#3, G#3, A3. Measure 211: F#3, G#3, A3. Measure 212: F#3, G#3, A3. Measure 213: F#3, G#3, A3. Measure 214: F#3, G#3, A3.

215

Measures 215-219. Treble clef. Key signature: one sharp (F#). Measure 215: quarter notes F#4-G#4, quarter note A4, quarter note B4, quarter note C5. Measure 216: quarter notes F#4-G#4, quarter note A4, quarter note B4, quarter note C5. Measure 217: quarter notes F#4-G#4, quarter note A4, quarter note B4, quarter note C5. Measure 218: quarter note F#4, quarter note G#4, quarter note A4, quarter note B4. Measure 219: quarter note F#4, quarter note G#4, quarter note A4, quarter note B4. Bass clef: Measure 215: F#3, G#3, A3. Measure 216: F#3, G#3, A3. Measure 217: F#3, G#3, A3. Measure 218: F#3, G#3, A3. Measure 219: F#3, G#3, A3.

220

Measures 220-223. Treble clef. Key signature: one sharp (F#). Measure 220: quarter note F#4, quarter note G#4, quarter note A4, quarter note B4. Measure 221: quarter note F#4, quarter note G#4, quarter note A4, quarter note B4. Measure 222: quarter note F#4, quarter note G#4, quarter note A4, quarter note B4. Measure 223: quarter note F#4, quarter note G#4, quarter note A4, quarter note B4. Bass clef: Measure 220: F#3, G#3, A3. Measure 221: F#3, G#3, A3. Measure 222: F#3, G#3, A3. Measure 223: F#3, G#3, A3.

224

Measures 224-227. Treble clef. Key signature: one sharp (F#). Measure 224: quarter note F#4, quarter note G#4, quarter note A4, quarter note B4. Measure 225: quarter note F#4, quarter note G#4, quarter note A4, quarter note B4. Measure 226: quarter note F#4, quarter note G#4, quarter note A4, quarter note B4. Measure 227: quarter note F#4, quarter note G#4, quarter note A4, quarter note B4. Bass clef: Measure 224: F#3, G#3, A3. Measure 225: F#3, G#3, A3. Measure 226: F#3, G#3, A3. Measure 227: F#3, G#3, A3.

228

Measures 228-231. Treble clef. Key signature: one sharp (F#). Measure 228: quarter note F#4, quarter note G#4, quarter note A4, quarter note B4. Measure 229: quarter note F#4, quarter note G#4, quarter note A4, quarter note B4. Measure 230: quarter note F#4, quarter note G#4, quarter note A4, quarter note B4. Measure 231: quarter note F#4, quarter note G#4, quarter note A4, quarter note B4. Bass clef: Measure 228: F#3, G#3, A3. Measure 229: F#3, G#3, A3. Measure 230: F#3, G#3, A3. Measure 231: F#3, G#3, A3.